

ELECTRONIC FLIGHT STRIP SYSTEM

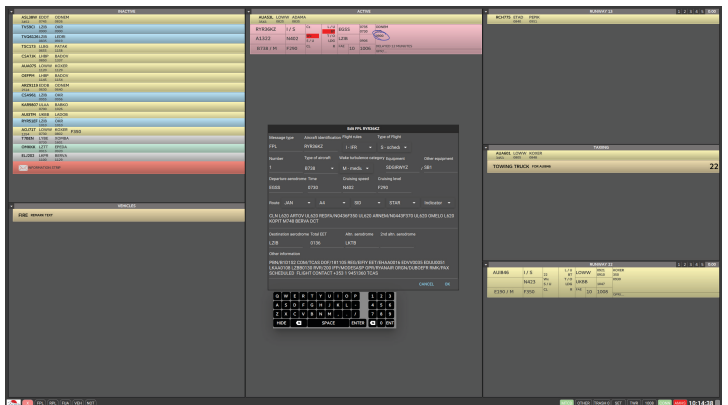
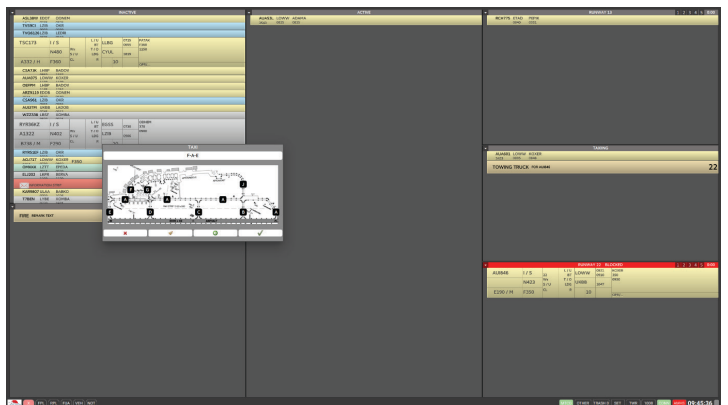
EFS SYSTEM AS A PART OF ICZ LETVIS®



EFS system by ALES enables flight strips to be viewed in a fully digital form on a computer touch-pen display. It is noticeable for integrating recognised advantages of a paper strip system and capabilities of electronic data handling. Moreover, thanks to its work-based support logic to facilitate ATCOs' work, the time to handle data input and the strip handling time are significantly reduced.

[KEY FEATURES]

- ▶ Important tool for planning and controlling ground and air traffic control
- ▶ Optimal presentation of relevant information
- ▶ Open and modular architecture
- ▶ Highly configurable HMI
- ▶ Highly configurable work flow
- ▶ Standard work flow steps performed with a single click
- ▶ Accepting flight plan data from FDPS via AFTN/AMHS, OLDI/AIDC
- ▶ Intuitive creation of flight strips for all kinds of flights
- ▶ Option of being interfaced with arrival/departure management systems
- ▶ Recording and replay



[Electronic Flight Strip System]
■ APPLICATION SW AND OPERATING SYSTEM

[Operating System]	LINUX SLED/SLES 11 or higher
[Application SW]	SW module ICZ LETVIS EFS includes: ▶ Process ICZ LETVIS FDD (Flight Data Distribution) server ▶ User's interface ICZ LETVIS EFS

■ HARDWARE AND TECHNICAL PARAMETERS

[Main HW]	HP/DELL/NEC (INTEL)
[LAN]	Ethernet, TCP/TCP, UDP/IP
[Supported aeronautical interfaces]	AFTN -TCP/IP AFTN -RS232 AMHS - X.400/P3, (API : Isode's X.400)
[Input/Output data protocols]	ALES-XML-messages (FDP, SIM,...) ICAO message format ADEXP message format
[Basic supported messages]	Flight plan messages (L4444) - FPL,CHG,DLA,CNL, DEP, ARR, Coordination messages (OLDI) - ABI, ACT, REV, PAC, MAC, LAM, METAR NOTAM
[Maximum FPL]	≥ 1 000

COMMERCIAL CONTACT

ALES a.s. Soblahovská 2050
 911 01 Trenčín
TEL.: +421 326 582 580
E-MAIL: sales@aero.cz

COMMERCIAL CONTACT

ICZ a.s. Na hřebenech II 1718/10
 140 00 Prague 4
TEL.: +420 222 271 111
E-MAIL: marketing@i.cz