

# ICZ LETVIS® - ARCH Archiving

DATA AND VOICE COMMUNICATION ARCHIVING SYSTEM

THE ICZ LETVIS® ARCH (Archiving) PRODUCT ENABLES ICZ LETVIS® SYSTEM PROCESSES TO CREATE DATA AND VOICE COMMUNICATION RECORDS.

The ICZ LETVIS® ARCH product is a system enabling data and voice communication recording, the archiving of these recordings, searching for them, and replaying the original processes. This can enable, for example, the objective reconstruction of a recorded air situation over a specified time period, and the playback of communication by an operator and others, which may be of use, for example, during the reconstruction and investigation of incidents.

## [ BASIC FUNCTIONS ]

### Data recording

- ▶ Collection, recording and distribution of data provided by selected processes on a ICZ LETVIS® (ICZ LETVIS® ArchDrec) system workstation
- ▶ Central data repository management (ICZ LETVIS® ArchDser)
- ▶ Replaying recorded data (ICZ LETVIS® ArchDrep)
- ▶ Support during the creation of a text journal for application operation (Journal-type reports)
- ▶ Browsing of journal reports (ICZ LETVIS® Journalview)

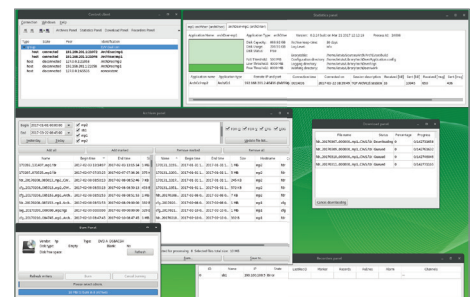
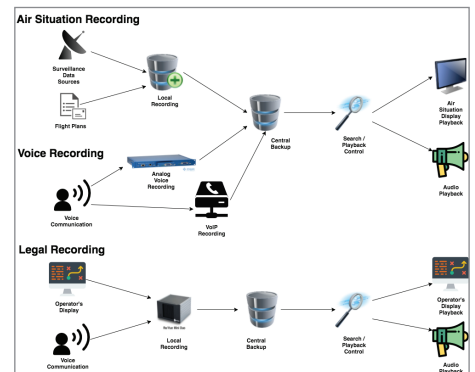
### Voice recording

- ▶ Recording of analogue voice communication
- ▶ Recording of VoIP communication (ICZ LETVIS® ArchVrec)
- ▶ Central voice recordings repository management (ICZ LETVIS® ArchVser)
- ▶ Replaying recorded voice data (ICZ LETVIS® ArchVrep, PulseAudio)
- ▶ Receiving and replaying voice communication on a target workstation (PulseAudio)

### Graphical user interface

- ▶ Control client (ICZ LETVIS® ArchCcl) (browsing, downloading and backing up archives, system elements status overview)

## ICZ LETVIS ARCH



[ ICZ LETVIS® - ARCH ]

■ APPLICATION SW AND OPERATING SYSTEM

OPERATING SYSTEM	LINUX SLED/SLES 12 (X64) AND HIGHER
Application SW	The ICZ LETVIS® ARCH SW product family includes: <ul style="list-style-type: none"> <li>▶ ArchDrec process</li> <li>▶ ArchDser process</li> <li>▶ ArchDrep process</li> <li>▶ ArchVrec process</li> <li>▶ ArchVser process</li> <li>▶ ArchVrep process</li> <li>▶ PulseAudio process</li> <li>▶ ArchCcl control client</li> <li>▶ Journalview client</li> </ul>

■ HARDWARE AND TECHNICAL PARAMETERS

Basic HW	HP/DELL/COTS – INTEL platform
Recordings data format	ALES-FDR-D, ALES-FDR-V
Network protocols used	TCP/IP, RTP, SDP, RTSP
Maximum number of applications connected to ArchDrec	64
Maximum number of ArchDser connected to ArchDrec	8
Maximum number of ArchDrec backed up to ArchDser	64
Maximum number of recorded analogue audio channels	64

**COMMERCIAL CONTACT**

**ALES a.s.** Soblahovská 2050  
 911 01 Trenčín  
**TEL.:** +421 326 582 580  
**E-MAIL:** sales@ales.sk

**COMMERCIAL CONTACT**

**ICZ a.s.** Na hřebenech II 1718/10  
 140 00 Prague 4  
**TEL.:** +420 222 271 111  
**E-MAIL:** marketing@i.cz