



ICZ AMIS*MIS

MANAGEMENT INFORMATION SYSTEM FOR HEALTHCARE FACILITIES

THE ICZ MANAGEMENT INFORMATION SYSTEM FOR HEALTHCARE ESTABLISHMENTS IS A RESPONSE TO HEALTHCARE FACILITY MANAGERS' LONG-TERM NEED FOR IMPORTANT DATA SO THAT THEY CAN MAXIMISE THEIR ORGANIZATION'S INCOME AND MINIMIZE THE RISK OF LOSSES, AND ALSO HAVE A TOOL AVAILABLE FOR EFFECTIVE COST MANAGEMENT IN THE ORGANIZATION.

[TRUSTED DATA IS THE FOUNDATION]

The ICZ AMIS*MIS solution is based on the trusted AMIS*H healthcare accounting system used in many Czech hospitals. The transformation of this data continues with a robust tool for data integration (ETL).

[METHODOLOGICAL PRINCIPLES]

ICZ AMIS*MIS uses proprietary methodologies and standards for data processing and verification and for indicator calculations. The acquired information is both interpretable and comparable thanks to the stringent application of the methodologies.

[BENCHMARKING]

Unlike other solutions, ICZ AMIS*MIS is focused on indicator monitoring not only within the hospital, but also compares key parameters with those from different hospitals of the same type. The hospital thus acquires information about its standing in all monitored fields in comparison with other organizations.

[PLANNED RESULTS]

ICZ AMIS*MIS support for comparing results and plans has been integrated from the very beginning. This applies not only to common fields (economics, logistics) but also to fields where this approach is rather new - i.e. the hospital's production itself.

[REPORTING AND ANALYSES]

In the reporting and analysis field, ICZ AMIS*MIS uses a state-of-the-art tool from the global leader in Business Intelligence tools - Oracle Business Intelligence.

[IR DRG SUPPORT]

ICZ AMIS*MIS includes fundamental DRG support. Using care cost evaluation, management can focus on those DRG groups, for example, that appear to be unprofitable for the hospital. The option to compare a particular hospital's results with reference data from other hospitals of the same type over a wide range of important and interesting parameters is another strength of this solution.

[ICZ AMIS*MIS FOCUS]

The following modules can be included in the ICZ AMIS*MIS system:

▶ HEALTHCARE

For performance monitoring and to minimise the risk of losses and sanctions.

▶ ECONOMICS

For cost monitoring from the structural viewpoint.

▶ ACTIVITY-BASED COSTING

For direct cost calculation and care processes cost assignment.

▶ DRG

For performance and efficiency monitoring from the care process viewpoint.

ICZ AMIS*MIS

FEATURES AND BENEFITS

- ▶ Komplexní manažerský informační systém pro oblast zdravotnictví.
- ▶ Zaměření zejména na oblasti, které zásadně generují či spotřebovávají zdroje.
- ▶ Důvěryhodná datová základna.
- ▶ Použití ověřených metodik.
- ▶ Silný důraz na benchmarking.
- ▶ Podpora DRG.
- ▶ Minimalizace ekonomických ztrát.
- ▶ Výpočet výnosů od ZP podle aktuální výkonnosti v návaznosti na smlouvy mezi zařízeními a pojišťovny.
- ▶ Možnost použití MIS jako nástroje pro vyúčtování péče.
- ▶ Možnost používat data stará půl dne.
- ▶ Automatizace rutinních postupů.
- ▶ Integrace dat.
- ▶ Intuitivní a ergonomické ovládání.
- ▶ Minimalizace licenčního zatížení.
- ▶ Rychlá a standardní implementace.
- ▶ Možnost využití mobilních zařízení pro práci s MIS.

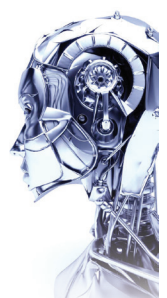


REDAKCE MAGAZÍNU CIO BUSINESS WORLD uděluje ocenění

CIO GRAND PRIX 2015 společnosti ICZ

ZA IMPLEMENTACI MANAŽERSKÉHO INFORMAČNÍHO SYSTÉMU PRO ŘEŠENÍ NEMOCNIC A ZDRAVOTNICKÝCH ZAŘÍZENÍ V MORAVSKOSLEZSKÉM KRAJI

Ondřej Hergesell
Marketingový manažer ICZ



[ICZ AMIS*MIS]

▶ **EARNINGS**

For the calculation of earnings from insurance companies by current performance according to the contracts concluded between the facility and health insurance companies.

▶ **PRESCRIPTIONS**

For the effective management of this field in a healthcare facility.

▶ **LOGISTICS**

For the effective management of logistics processes designed with regard to the specific characteristics of healthcare logistics.

▶ **HUMAN RESOURCES MANAGEMENT**

For human resources management within the organization.

▶ **QUALITY**

For quality monitoring and control of the provided care.

▶ **REGION**

For the simultaneous management and overview of multiple healthcare facilities.

[**CARE BILLING**]

The care billing system, the core of this solution, offers additional use options - ICZ AMIS*MIS can be used as the main or control billing system of a healthcare facility.

[**OVERVIEW OF MULTIPLE HEALTHCARE FACILITIES**]

ICZ AMIS*MIS is designed to be used by a group of healthcare facilities - e.g. for a regional overview. A special module provides cross-sectional or aggregate views of a group of facilities depending on the type and logic of information, for all fields contained in the MIS.

[**MINIMIZATION OF LICENSING COSTS**]

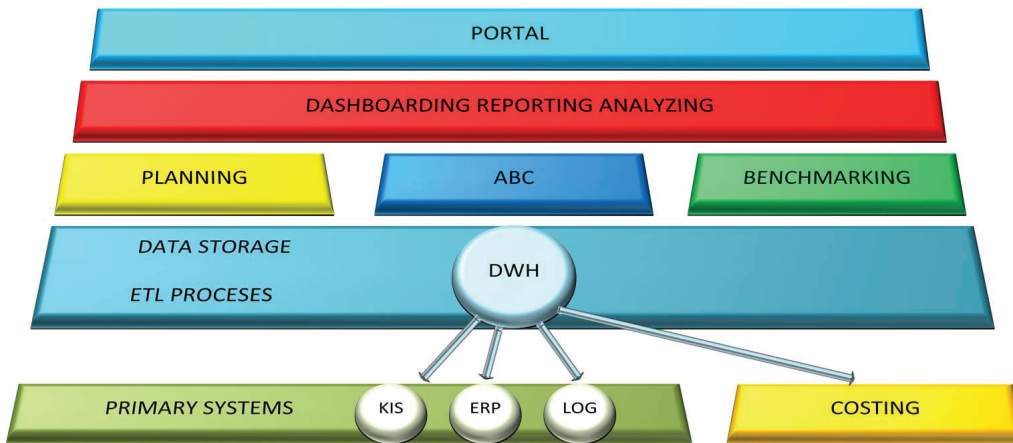
ICZ AMIS*MIS contains an integrated tool for the automatic sending of selected reports to so-called "passive users" who are not expected to actively use MIS features, minimizing licencing costs.

[**UP-TO-DATE DATA**]

Thanks to the implementation of web services for data input, ICZ AMIS*MIS can even use data that are just half-a-day old. ICZ AMIS*MIS therefore always uses current data, and not just information from last month's balance sheet.

[**SELECTED REFERENCES**]

- ▶ Hradec Králové University Hospital
- ▶ Institute for Clinical and Experimental Medicine
- ▶ Military University Hospital Prague
- ▶ Liberec Regional Hospital
- ▶ Brno University Hospital
- ▶ Ostrava Municipal Hospital
- ▶ Jičín Regional Hospital
- ▶ Havlíčkův Brod Hospital
- ▶ Litomyšl Hospital
- ▶ Nové Město na Moravě Hospital
- ▶ Břeclav Hospital
- ▶ Pelhřimov Hospital
- ▶ Jihlava Hospital
- ▶ Třebíč Hospital
- ▶ Moravian-Silesian region
- ▶ Frýdek-Místek Hospital
- ▶ Havířov Hospital with Outpatient Clinic
- ▶ Karviná-Ráj Hospital with Outpatient Clinic
- ▶ Třinec Hospital
- ▶ Krnov Combined Healthcare Facility
- ▶ Silesian Hospital in Opava



■ Concept of the ICZ AMIS*MIS Management information system

ICZ AMIS*MIS



ORACLE
BUSINESS INTELLIGENCE



COMMERCIAL CONTACT

ICZ a.s. Na hřebenech II 1718/10
140 00 Prague 4
TEL.: +420 222 271 111
FAX: +420 222 271 112
E-MAIL: marketing@i.cz